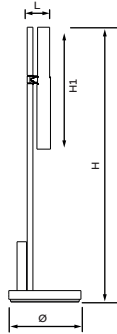


# kreon installation manual

## technics & dimensions



name	reference	safety class/ protection class	Vac	frequency	nom. current gear	power factor	max. power	LxH	H1	Ø
esprit desk	KR96391X-9027-WDL-XX	II / IP20	230Vac	50/60Hz	0,45A	0,9λ	10W	48x70x562	250	150

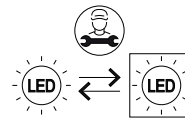
## 1. safety information

### light source/gear information safety information

before cleaning or maintenance, always switch off the power supply.  
While the light source is on and until it has cooled, there is a risk of burns from the light source and adjacent elements. Never look directly at a LED light source. LEDs are sensitive to pressure and acidity; never touch them and never put any load onto them.  
Kido may only be operated with the supplied power adapter from Belux.

### light source containing product

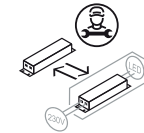
The light source contained in this luminaire shall only be replaced by the manufacturer or his service agent or a similar qualified person.



**Energy Efficiency Class and EPREL-information for each specific LED/fixture can be found on the last page of this manual**

### gear containing product

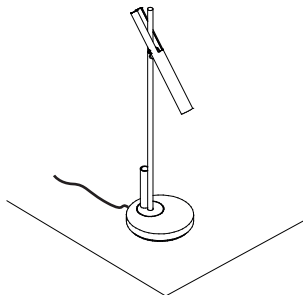
the gear contained in this luminaire shall only be replaced by the manufacturer or his service agent or a similar qualified person



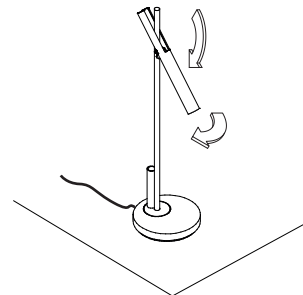
**Please make sure the main voltage is disconnected before proceeding!** ⚡

## 2. installation

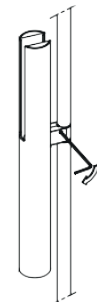
place the esprit desk on any desired surface



aim the fixture, 360° rotation, 90° inclination



optional: secure the head with allen key

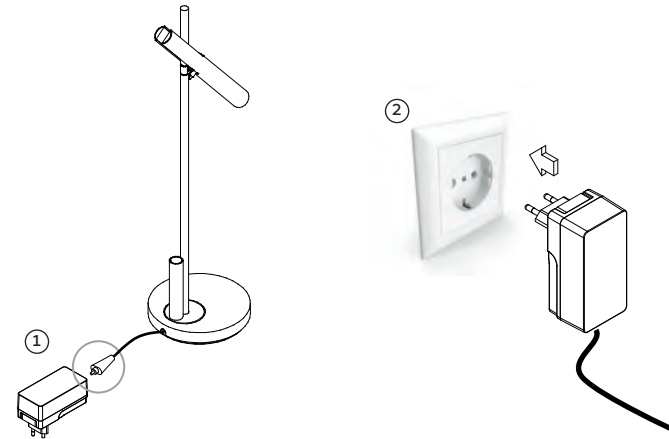


# kreon installation manual

## 3. installation table mount

- ① plug the connector coming from the fixture into the adapter
- ② plug the other side of the adapter in the socket for the 230V connection

**IMPORTANT:**  
respect the order described above  
to avoid a hotswap of the LED!



## 4. functionalities

dimming the fixture

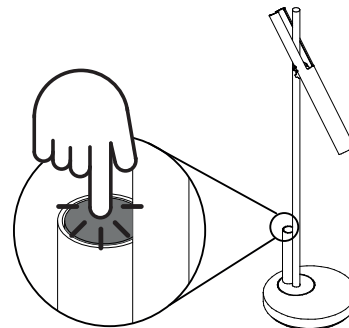
control and dimming of the fixture works  
through the capacitive cap

dim protocol:  
1x touch = ON

hold = dim up or dim down

1x touch = OFF


**NOTE:** release your touch before  
carrying out the next command!



## 5. pictures



# kreon installation manual

Fixture reference	LED reference	Energy Efficiency Class	QR-code	EPREL link
KR96391X-9027-WDL-XX	KR7000104112	G		<a href="https://eprel.ec.europa.eu/qr/1207663">https://eprel.ec.europa.eu/qr/1207663</a>

# kreon replacement parts

